

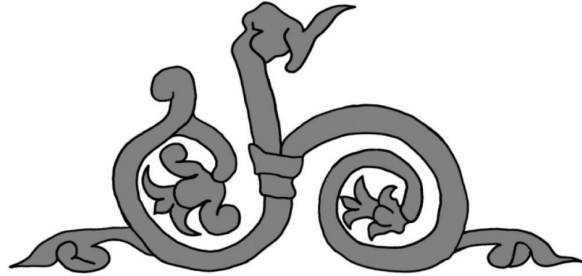
ZIRIDAVA  
STUDIA ARCHAEOLOGICA

30  
2016



MUSEUM ARAD

---



ZIRIDAVA  
STUDIA ARCHAEOLOGICA

---

30  
2016

**Editura MEGA**

Cluj-Napoca  
2016

## **MUSEUM ARAD**

### **EDITORIAL BOARD**

Editor-in-chief: Peter Hgel.

Editorial Assistants: Florin Mrginean, Victor Sava.

### **EDITORIAL ADVISORY BOARD**

V. Brc (Cluj-Napoca, Romania), M. Crciumaru (Trgovite, Romania), S. Coci (Cluj-Napoca, Romania), F. Gogltan (Cluj-Napoca, Romania), S. A. Luca (Sibiu, Romania), V. Kulcsr (Szeged, Hungary), M. Takcs (Budapest, Hungary), J. O'Shea (Michigan, USA), K. Z. Pinter (Sibiu, Romania), I. Stanciu (Cluj-Napoca, Romania), I. Szatmri (Bkcsaba, Hungary).

In Romania, the periodical can be obtained through subscription or exchange, sent as post shipment, from Museum Arad, Arad, Piata G. Enescu 1, 310131, Romania.  
Tel. 0040-257-281847.

### **ZIRIDAVA STUDIA ARCHAEOLOGICA**

Any correspondence will be sent to the editor:  
Museum Arad  
Piata George Enescu 1, 310131 Arad, RO  
e-mail: ziridava2012@gmail.com

The content of the papers totally involve the responsibility of the authors.

Layout: Francisc Baja, Florin Mrginean, Victor Sava

ISSN 2392-8786



EDITURA MEGA | [www.edituramega.ro](http://www.edituramega.ro)  
e-mail: [mega@edituramega.ro](mailto:mega@edituramega.ro)

# Contents

<b>Octavian Cristian Rogozea, Alexandru Berzovan, Eugen Pădurean</b> Contribution to the Repertory of Late Neolithic Settlements on the Territory of Arad County.....	7
<b>Mária Bondár</b> A new Bronze Age wagon model from Szombathely-Motel.....	27
<b>Florin Gogâltan, Victor Sava</b> An Older Bronze Age Funerary Discovery from Zimandu Nou (Arad County).....	43
<b>Luminița Andreica-Szilagy</b> Anthropological Analysis of Two Cremation Graves Discovered in the Settlement of Zimandu Nou (Arad County).....	55
<b>Eugen Pădurean, Alexandru Berzovan</b> Prehistoric Vestiges on Highiș Peak in Zarandului Mountains (Municipality of Tîrnova, Arad County).....	61
<b>Victor Sava</b> The Archaeological Site of Felnac “Complexul Zootehnic” (Arad County). Discussions on the Late Bronze Age Settlement and Cemetery.....	69
<b>Octavian Cristian Rogozea, Răzvan Ioan Pinca</b> Two Bronze Items Discovered by Chance: the Bracelet from Jupa (Caraș-Severin County) and the Long Dagger from Găvojdia (Timiș County).....	109
<b>Sándor Berecki</b> Two Late Iron Age Graves from Vladimirescu.....	115
<b>Cristina Bodó, Valeriu Sîrbu</b> The Fortifications in Câmpuri Surduc in the Context of the Dacian Discoveries made in the Mureș Gorge (the Șoimuș – Zam Area).....	125
<b>Alexandru Berzovan</b> On a Presumed Roman Military Expedition in the Valley of River Marisos at the Turn of the First Century A.D.....	141
<b>Britta Burkhardt</b> Reflecting on the Typological Analysis of Roman Provincial Baths and Bathhouses .....	149
<b>Dan Băcuet-Crișan, Sanda Băcuet-Crișan</b> Old and New Archeological Researches Regarding the Early Medieval Habitat in Sylvania Basin.....	159
<b>Aurel Dragotă</b> Typology of Crescent-Shaped Pendants.....	171
<b>Silviu Oța, Andra Samson</b> Several Observations on the Medieval Battle Knives Found on the Territory of Romania (The MNIR Collection).....	189
<b>Florin Mărginean</b> Ottoman-Turkish Archaeological Research in Arad County. Turkish Strongholds in the Second Half of the 16 <sup>th</sup> Century between Mureș and Crișul Alb (The Beginning of a thematic Approach).....	211
<b>Călin Ghemiș</b> From the History of Archaeological Researches in Crișana: Dr. Ernest Andrassy (I).....	229
Abbreviations.....	249



# Two Late Iron Age Graves from Vladimirescu\*

Sándor Berecki

**Abstract:** Two inhumation graves were discovered during preventive excavations performed in 2006 in Vladimirescu, Arad County. They are dated to the Late Iron Age and their inventories are specific to the Celtic horizons from the end of the fourth century and the beginning of the third century B.C. in the eastern part of the Carpathian Basin.

**Keywords:** Late Iron Age, Celts, graves, inhumation, Banat, Carpathian Basin.

In September 2006, during the construction of a house in Vladimirescu, Arad County, in the vicinity of the “Vladilact” farm, 3 km north from River Mureş, two Late Iron Age inhumation graves were disturbed together with settlement traces documented by scattered potsherds from the second–fourth and eleventh–thirteenth centuries A.D. (Pl. 1/1–2)<sup>1</sup>.

Oriented S–N, grave no. 1 was observed at 0.90 m in depth and was sectioned by the foundation trench of the building (Pl. 1/3–4). Parts of the skeleton and several objects were recovered by the workers. The pit of the grave could not be observed. An iron spearhead found on the left side of the skull was removed before the arrival of the archaeologists. The archaeological investigation of the proximal area revealed the forearm of the skeleton bent towards the pelvis. A bronze bracelet with a bronze ring was found on the wrist of the left hand, while the bottom of a handmade vessel was placed near the right leg.

The human bones of the robust, tall adult male were severely damaged by the unqualified conditions of discovery. 80% of the skull is missing and only a few fragments from the pelvis, a radius, the left and right humerus bones, the right and left femurs and the left tibia have been preserved. Two animal bone fragments were also identified among the human remains. The recovered grave inventory consists of a spearhead, a bracelet, a ring and piece of pottery. The iron spearhead is poorly preserved, the blade is highly corroded, and the shaft is broken at the tubular neck. Dimensions: length: 175 mm, max. width: 45 mm, thickness: 7 mm, Ø neck: 12 mm, weight: 96 g. The oval bronze bracelet was decorated with two grooves close to the free, enlarged buffer terminals. Dimensions: 73 × 65 mm, thickness: 4 mm. A simple bronze ring was hanged on the bracelet. Dimensions: Ø int. = 21 mm; Ø ext. = 24 mm. The total weight of the two artifacts was 51 g. The bottom of the coarse, handmade pot was brick-red with dark fire clouds on the rough surface. The vessel had gone through oxidizing firing and it was tempered with sand and crushed potsherds. Dimensions: Ø bottom: 115 mm.

A second skeleton was found five meters east from the first grave, at a depth of 0.80 m, oriented SE–NW, also sectioned by the foundation trenches of the building (Pl. 1/5; 2/4). The pit of the grave could not be observed. The hands of the deceased had been placed on the pelvis. The upper jaw of a sow (*Sus scrofa domestica*) and a small iron knife were found close to the right elbow. A black large bitronconic vessel with wide mouth and everted rim was placed near the right femur. It was unfortunately destroyed and unrecoverable. An iron object measuring 90 mm was observed above the right knee, but its function could not be determined because of the advanced state of corrosion.

The bones of the robust, adult woman are poorly preserved. From the skull only some fragments have been preserved, together with the left humerus, the radius and the shoulder blade, some rib fragments, and fragments from the right and left femur and tibia. A small, fragmentary, slightly curved iron knife was found close to the animal bones. Dimensions: Length: 51 mm; width: 14 mm, thickness: 2 mm. The black, wheel-made pot was destroyed by soil pressure and could not be recovered. Dimensions: Ø mouth: 130 mm, max. Ø: 280 mm.

\* English translation: Ana M. Gruia.

<sup>1</sup> The research team consisted of: Peter Hügel (scientific coordinator), George P. Hurezan, Florin Mărginean, Zsuzsanna Kopeczny (Arad Museum Complex).

The inventory of grave no. 1 is more than certainly incomplete. Nevertheless, the recovered items allow for a typological analysis and for the chronological determination of the funerary complex.

The buffer-end arm ring from Vladimirescu (Pl. 2/1) can be included in variant B2a-Pișcolt<sup>2</sup>, a simpler and more robust form of this type of jewelry item dated in the cemetery from north-western Romania during the first horizon (LT B1/B2). According to J. Bujna's typology elaborated for the northern part of the Carpathian Basin, this type is part of variant A1-Ba and is to be dated during LT B1<sup>3</sup>. Two bracelets very similar to the one discovered in Vladimirescu are stray finds from Aradu Nou. One of the items is entirely preserved (with the diameter of 64 mm) and the second is fragmentary, preserving only the buffer end<sup>4</sup>. Another similar item was found in the inhumation grave 2 from the same site besides an early Duchov brooch that dates the funerary complex to LT B2<sup>5</sup>.

Analogies from the eastern part of the Carpathian Basin can also be mentioned from Tărian<sup>6</sup> and Pișcolt cremation grave 36 (iron bracelet) from the first horizon (LT B1b)<sup>7</sup>. These jewelry items are frequent finds for the early phases in the western and northern parts of the Carpathian Basin and the neighboring areas; such items have been mentioned in Egyházásfalu<sup>8</sup>, Kamond<sup>9</sup>, Kósd<sup>10</sup>, Győr<sup>11</sup>, Kamenín<sup>12</sup>, Dubník<sup>13</sup>, Brno-“Chrlice” and “Horní Heršpice”<sup>14</sup>, Bedřichovice<sup>15</sup>, Blučina-“Konopné zahrádky” and “Hřbitovní ulice”<sup>16</sup>, Tikovice<sup>17</sup>, Chotusice, Neškaredice, Sedlec<sup>18</sup>, Makotřasy (variant with overlapping ends)<sup>19</sup>, Kietrz<sup>20</sup>, Sobešuky, Škrle, Žatec-“Pertsch” și “Klobasa”<sup>21</sup> and Pottenbrunn<sup>22</sup>.

In Vladimirescu the bronze arm ring was found on the left wrist of the male deceased. This type of bracelet features more often in women's graves (such as, for example, in Bedřichovice, Blučina-“Konopné zahrádky”, Makotřasy, Sobešuky and Pottenbrunn), but can also be encountered in men's graves (in Dubník and Brno-“Chrlice”, for example). When found in inhumation graves (in Tărian, Kamenín and Kietrz grave 1305 they had been deposited in incineration graves), such items had been most often placed on the left forearm (Dubník grave 2a, Brno-“Chrlice” grave 8, Kietrz grave 1807 and Pottenbrunn grave 1003). The women's grave from Bedřichovice grave 8/80, Makotřasy grave 3 and 5 contained two such bracelets in pairs, one on each forearm. In Brno-“Chrlice” grave 13 a similar bracelet was found on the right humerus, in Blučina-“Konopné zahrádky” grave 19 one bracelet was found on each ankle and in Makotřasy, in grave no. 1 that belonged to a teenager two such bracelets had been placed on the right humerus.

The bronze ring from grave 1 in Vladimirescu (Pl. 2/1), a relatively rare find among the funerary inventories from the Carpathian Basin, can be included in group 100 in Waldhauser's typology elaborated for gold rings<sup>23</sup>, with analogies in grave 40 from Dürrenberg<sup>24</sup> and with the rings with two spirals but identical section from graves 1 and 5-7 from Stettlen-Deisswil<sup>25</sup>. It resembles the bronze bracelets type BR-K3-B Bujna from the northern part of the Carpathian Basin, dated there during LT B1 and

<sup>2</sup> Némethi 1988, 66.

<sup>3</sup> Bujna 2005, 13, Obr. 2-3.

<sup>4</sup> Crișan 1974, 41, fig. 7/4, 8/4-5.

<sup>5</sup> Crișan 1974, 44, 49, 12/2.

<sup>6</sup> Chidioșan, Ignat 1972, fig. 2/6.

<sup>7</sup> Némethi 1988, fig. 4/M36-3.

<sup>8</sup> Hunyady 1942, T.1/6.

<sup>9</sup> Mithay 1966, 25/2-3.

<sup>10</sup> Hunyady 1942, XXIX/2.

<sup>11</sup> Lovas 1939, Taf. II/5.

<sup>12</sup> Hunyady 1942, T. IX/4; Benadik, Vlček, Ambros 1957, Taf. XL/27.

<sup>13</sup> Bujna 1989, 251-252, Taf. I/B3.

<sup>14</sup> Čižmář 1975, Abb. 3/3; Čižmářová 2011, 80, 84-86, 168, 171-173, Tab. 1/3, 5; 5/4; 7/11; 9/14.

<sup>15</sup> Čižmářová 2011, 42, 97, 180-181, Tab. 11/4; 21/7-8.

<sup>16</sup> Čižmářová 2011, 45, 105-106, 188-189, Tab. 12/4; 28/4-5; 30/14.

<sup>17</sup> Čižmářová 2011, 159, 232, Tab. 55/7-8.

<sup>18</sup> Čižmář, Valentová 1977, Obr. 3/3; 4/4, 6-7; 9/3.

<sup>19</sup> Čižmář 1978, 119-120, Abb. 2/2-3; 4/4, 6; 5/3, 5.

<sup>20</sup> Gedl 1978, Abb. 12; Taf. II/5; IX/6.

<sup>21</sup> Holodňák 1988, 51-52, Abb. 4/1; 13/1-3; 15/4, 7.

<sup>22</sup> Ramsel 2002a, 61, Abb. 56, Taf. 79/5; Ramsel 2002b, 317, Abb. 5/5.

<sup>23</sup> Waldhauser 1998, Abb. 5.

<sup>24</sup> Penninger 1972, 74, Taf. 38/B5.

<sup>25</sup> Rey 1999, 130, Taf. 1/1, 8.



B2a<sup>26</sup>. A bronze ring similar to the one from Vladimirescu has been discovered during the recent excavations in Aradu Nou, in grave 16, where it was also attached to the bracelet that the deceased wore on the right arm. The complex in question is dated, like the entire cemetery, to LT B1/B2 or B2a<sup>27</sup>. Other close analogies consist of the rings from graves 50, 84, 157 and 158 in Münsingen-Rain, where all items had been deposited on the right arms of the deceased and are dated to phase Ic-Viollier<sup>28</sup>; the ring from grave 1003 from Pottenbrunn (that also contained a bracelet similar to the one from Vladimirescu), was found on the right arm of a woman<sup>29</sup>; the ring from grave 117 from Mannersdorf was found on the left arm of a 41–50 years old warrior<sup>30</sup> and the ring from grave 60 in Karaburma was dated to the early period of phase III<sup>31</sup>.

Similar rings, but with several curbs, also feature in graves 37 (three rings) and 39 (two rings) from the cemetery in Manching–“Steinbichel”; in both cases they were attached to bracelets placed on the deceased’s left arm<sup>32</sup>. A ring that is similar in section was discovered beside a series of rings of various types in woman’s grave no. 127 from Maňa<sup>33</sup>. A similar ring was also found in the Early Roman grave no. 128 from Zemplín<sup>34</sup>.

Graves with rings from the inventory are known in the eastern part of the Carpathian Basin in Fântânele–“Dâmbul Popii” (grave 79/1973)<sup>35</sup>, Remetea Mare<sup>36</sup>, Ciumești<sup>37</sup>, Curtuiușeni graves 2 and 9<sup>38</sup>, and Pișcolt graves 1, 9, 40, 189 and 202<sup>39</sup>, all graves belonging to women or children. Though typologically different, the rings from the south-western part of the Carpathian Basin, from Zvonimirovo<sup>40</sup> and Brežice<sup>41</sup>, feature in female graves, but in Mannersdorf and Maňa they feature both in women’s graves and in those of men buried with weapons<sup>42</sup>, just like the one from Vladimirescu. Taking into consideration the conditions of discovery – attached to the bronze bracelet –, one cannot decide on which arm the piece of jewelry was worn. At Pișcolt, in inhumation graves 9, 189 and 202 and in Curtuiușeni grave 2 they were worn on the left hand and in M181 from Pișcolt on the right hand<sup>43</sup>.

Besides graves 16 from Aradu Nou and the previously mentioned graves from Manching, a bronze ring attached to a bronze bracelet has also been mentioned in grave 126 Maňa that belonged to an adult man who wore it on the left arm as well, just like in the case of the grave from Vladimirescu, though not on the wrist but on the humerus<sup>44</sup>. A bronze ring attached to a neck chain was found in the cemetery from Maňa<sup>45</sup>, a bronze collar was discovered in Kamenín, incineration grave no. 148<sup>46</sup>, while a ring attached to a brooch was recorded in Brežice grave 56 and Vác–“Gravel pit” grave 53<sup>47</sup>.

One can note that the section of the bronze ring from Vladimirescu is similar to that of the not so wide spread glass rings type 26-Karwowski and of the silver bracelets type 6a-Haevernick and 6a-Karwowski<sup>48</sup>. Though in the case of glass jewelry the shapes with curbs are much more spread and

<sup>26</sup> Bujna 2005, 80, Obr. 62; 65.

<sup>27</sup> Rustoiu, Ursuțiu 2013, fig. 9A; I thank Mr. A. Rustoiu for the information on the grave from Aradu Nou.

<sup>28</sup> Viollier 1916, 77, 14, 117–118, Pl. 28/16–18; Hodson 1968, 40, 47–48, Pl. 23/837.

<sup>29</sup> Rams 2002a, 59, Abb. 55, Taf. 79/7.

<sup>30</sup> Rams 2011, 107, Abb. 79, Taf. 135/11.

<sup>31</sup> Todorović 1972, 26, 86, T. XXI/10.

<sup>32</sup> Krämer 1985, 88–89, Taf. 23/9–11, 25/10–11.

<sup>33</sup> Benadik 1983, 59, Taf. L/12.

<sup>34</sup> Pieta 2010, Fig. 127/19.

<sup>35</sup> Rustoiu 2011, 164, fig. 2/20, 24.

<sup>36</sup> Rustoiu 2008, 111–115, fig. 55.

<sup>37</sup> Zirra 1968, 69, fig. 33; pl. X.

<sup>38</sup> Teleagă 2008, 104–105, Taf. 2/2.5, 2.10; 8/9.3.

<sup>39</sup> Némethi 1988, 50, 61, fig. 2/M9–4–6; 10/M202–5a–b; Némethi 1989, 75, fig. 1/M1–5; 20/M189–11; Némethi 1992, 65, fig. 3/M40–9.

<sup>40</sup> Dizdar 2013, 261.

<sup>41</sup> Jovanović 2011, 55, 58.

<sup>42</sup> Rams 2011, 107, Abb. 79, Taf. 135/11; Benadik 1983, Taf. IX, XXIII.

<sup>43</sup> Némethi 1988, 50, 61, fig. 2/M9; 10/M202; Némethi 1989, fig. 18/M181; 20/M189; Teleagă 2008, 130.

<sup>44</sup> Benadik 1983, 58, Abb. 12/126; Taf. XLIX/7–8.

<sup>45</sup> Benadik 1983, Taf. XLV/11.

<sup>46</sup> Benadik *et al.* 1957, 111, Abb. 31/15, Taf. XLI/4.

<sup>47</sup> Hellebrandt 1999, Pl. XLIII/7; Jovanović 2011, fig. 3/1.

<sup>48</sup> Haevernick 1960, 49, Taf. 3, 17; Karwowski 2004, 21.

varied and considering the fact that the bronze rings are earlier than the glass ones, one can presume that the latter were inspired by the first.

The spearhead from grave 1 from Vladimirescu (Pl. 2/3) lacks the largest part of the socketing tube and thus one cannot determine how it was attached to the wooden shaft. Though highly corroded and thus fragmented, the weapon is most probably of type I-Rapin ('classical shapes')<sup>49</sup>, 1.2-Drnić ('spears with a flat-hammered elongated blade and a midrib, rhombic in cross-section') widely dated from LT B2 to LT D in the southern part of the Carpathian Basin<sup>50</sup>, type M1-Pișcolt dated starting with LT B1b<sup>51</sup>, type A3-Ludas, dated during LT B2<sup>52</sup> or type 1-Pieta<sup>53</sup>.

A small knife, similar to the one deposited in grave 2 from Vladimirescu (Pl. 2/5) was discovered in inhumation grave 2 from Aradu Nou<sup>54</sup>. It belongs to type J-Pișcolt<sup>55</sup>. Analogies for this popular type in the Carpathian area can also be mentioned from Fântânele–"Dâmbul Popii" (graves 62 and 79)<sup>56</sup>, Fântânele–"Dealul Iușului / La Gâța"<sup>57</sup>, Pișcolt graves 9, 146, 152, 188, 190 and 207<sup>58</sup>, Ciumești, grave 28, belonging to a woman, artifact with bone sheath<sup>59</sup>, Tărian, grave 34<sup>60</sup>, Bodroghalom<sup>61</sup>, Jászberény–"Cseróhalom"<sup>62</sup>, Sülysáp<sup>63</sup>, graves nos. 46 and 54 from Mátraszőlős–"Királydomb"<sup>64</sup>, graves 6 and 9 from Szőreg<sup>65</sup>, in relatively high numbers in Szentlőrinc<sup>66</sup> or the cemetery from Bučany graves 8, 10, 23<sup>67</sup>. Other items dated from LT B2 until LT C, discovered both in women's and in men's graves, are known from the cemetery in Ludas–"Varjú-Dűlő", where one of the knives preserves the decorated bone hilt as well<sup>68</sup>. In Karaburma, the similar knife from grave 14 had a decorated blade<sup>69</sup>. Almost always placed in graves besides animal inventories, these items are considered to be of Scythian tradition<sup>70</sup>. They differ from billhooks through size and grave placing, as billhooks are often found together with whetstones<sup>71</sup>. Such knives also feature in the inventory of complexes from settlements, such as pit-houses B and C from Ciumești<sup>72</sup>.

The dating of the funerary inventory is mainly provided by the bronze bracelet with buffer-ended terminals. In the north-western part of the Carpathian Basin<sup>73</sup> but also in the cemetery from Pișcolt<sup>74</sup> this type of items has been dated to LT B1/B2. Thus the funerary inventory of grave 1 is dated to the first Celtic horizon from the Carpathian Basin, in the end of the fourth century B.C.<sup>75</sup>. The inventory of grave 2 from Vladimirescu unfortunately does not allow for an exact chronological determination, as small curved knives are specific to all Celtic horizons.

\*\*\*

<sup>49</sup> Brunaux, Rapin 1988, 133, fig. 66.

<sup>50</sup> Drnić 2015, 115–116, fig. 3.

<sup>51</sup> Némethi 1988, 69, fig. 7/2a–b.

<sup>52</sup> Szabó, Tankó 2012, 122, fig. 167.

<sup>53</sup> Pieta 2010, 281, Fig. 122/1–5.

<sup>54</sup> Crișan 1974, 44, fig. 12/3, 13/3.

<sup>55</sup> Némethi 1988, 68.

<sup>56</sup> Rustoiu 2011, 164, fig. 2/30; Rustoiu 2013, fig. 3/5.

<sup>57</sup> Vaida 2003, pl. III/2.

<sup>58</sup> Némethi 1988, 50, fig. 2/M9–9; Némethi 1989, fig. 10/M146–11; 11/M152–1; 19/M188–3, M190–2; 22/M207–8.

<sup>59</sup> Zirra 1968, 39, fig. 21/IV, 36/M28-IV, Pl. XIV/M28-IV.

<sup>60</sup> Chidioșan, Ignat 1972, 565–566, Pl. 7/5.

<sup>61</sup> Hellebrandt 1999, pl. LXIII/4.

<sup>62</sup> Kaposvári 1969, fig. 2/123, 16.

<sup>63</sup> Pétervári 2002, fig. 3/4.

<sup>64</sup> Almássy 2012, 118, 126–127, LVII/5, LXVI/3.

<sup>65</sup> Banner 1929, 100, 104, fig. 11/4; 15/5.

<sup>66</sup> Jerem 1968, 11, fig. 19/7–1; 20/11–2; 22/20–4, 26–4; 23/26–6; 24/33–4, 35–8; 29/62–1, 63–3.

<sup>67</sup> Bujna, Romsauer 1983, Taf. I/9; II/2; IX/4.

<sup>68</sup> Szabó, Tankó 2012, 126–129, fig. 175–176; Marion, Guillaumet 2012, 190–193.

<sup>69</sup> Todorović 1972, 78, T.5/Grob 14–1.

<sup>70</sup> Vasiliev 1973, 523–526; Némethi 1988, 68; Almássy 1998, 72; Szabó, Tankó 2012, 129; Marion, Guillaumet 2012, 190.

<sup>71</sup> Almássy 1998, 72.

<sup>72</sup> Zirra 1980, 45, 47, pl. X/6, XII/2, LII/15, 17.

<sup>73</sup> Čižmář 1975, 421; Čižmář 1978, 137, 141; Holodňák 1988, 52, 97, Abb. 25; Möller 2000, Abb. 4–5; Bujna 2005, 13, Obr. 2–3.

<sup>74</sup> Némethi 1988, 66.

<sup>75</sup> Berecki 2008, 51–53; Berecki 2015, 30.

Several Early and Middle La Tène sites are known in southern Crişana and northern Banat, on the Lower Mureş. A settlement with pit-buildings was identified during the 1970s in Vladimirescu during construction works performed in the north-western vicinity of the present discoveries, while traces of a second settlement are mentioned two km south-east, close to the ‘five mounds’<sup>76</sup>. The most important settlement in the area, dated to LT C1, is the one from Cicir–“La Gropi”, where several pit-houses with their corresponding pits were researched between 1965 and 1968<sup>77</sup>. A less researched settlement dated to LT C is mentioned in Şeitin–“Şălancă”<sup>78</sup>. Several La Tène weapons, jewelry items, tools and pots were found in Pecica, probably part of funerary inventories<sup>79</sup>. An anklet with three large hollow knobs is mentioned close by, in Sânpetru German<sup>80</sup>.

Another settlement was excavated during rescue excavations performed on the occasion of the construction of the highway in the vicinity of Arad, south of River Mureş. An incineration grave was found in Arad as well, on the territory of the former “IAS Ceala” farm in 1964. Its inventory contained four pots and five bronze bracelets dated to the first horizon in the eastern part of the Carpathian Basin (LT B1)<sup>81</sup>. Three wheel-thrown pots were discovered in 1912 and 1962 in the “Gai” Neighborhood, probably from graves in a bi-ritual cemetery dated to the Middle La Tène (LT B2–C)<sup>82</sup>. Another cemetery dated to LT B2a was repeatedly researched in “Aradu Nou Neighborhood”; a total number of 18 graves were discovered (two in 1967 and 16 in 2010), though several graves had been disturbed before the researches and others are outside the perimeter researched in 2010 during the construction of the highway<sup>83</sup>.

River Mureş had a special role in the colonization process of Transylvania in the middle of the fourth century B.C., as it was one of the main communication routes towards the intra-Carpathian regions. The fact that some communities settled in the Mureş plain areas of Banat and Crişana and that others left upstream on the Mureşului Valley indicate the complex processes through which communities arrived from the center of Europe settled in the eastern Carpathian region. From a geopolitical perspective, the Lower Mureş had an important role not only in the early colonization stage of the La Tène in the eastern part of the Carpathian Basin, but also during the subsequent decades when mobility adopted other forms and the region became an intermediary zone, of mediation and transit of Central European stylistic, technical and spiritual innovations while from east to west it mediated the circulation of authentic eastern elements.

## Acknowledgments

Florin Mărginean from the Arad Museum Complex has kindly provided for publication the documentation and inventory of the two graves and I hereby thank him. Szilárd-Sándor Gál has analyzed the human bones and Imola Kelemen has determined the animal bones. I am also grateful to Aurel Rustoiu for the information he has provided me.

**Sándor Berecki**

Mureş County Museum  
Târgu Mureş, ROU  
sberecki@yahoo.com

<sup>76</sup> Pădureanu 1979, 148–150; Pădureanu 1985, 41–42; Dietrich, Dietrich 2006, 45.

<sup>77</sup> Pădureanu 1985, 31–32; RepAR 1998, 42; Luca 2006, 25; Dietrich, Dietrich 2006, 36; LKA 2012, 354; Rustoiu 2015, 23, fig. 21.

<sup>78</sup> Blăjan 1975, 62; RepAR 1998, 95; Dietrich, Dietrich 2006, 44.

<sup>79</sup> Márton 1934, 126; Roska 1942, 224; Roska 1944, 67, fig. 40; Crişan 1973, 59–60; Crişan 1974, 44–47; RepAR 1998, 76; Dietrich, Dietrich 2006, 42; LKA 2012, 1454–1455.

<sup>80</sup> Zirra 1971, 179; Crişan 1973, 62; RepAR 1998, 89; Dietrich, Dietrich 2006, 43.

<sup>81</sup> Crişan 1973, 52–53; Crişan 1974, 38–39, fig. 1–4; RepAR 1998, 30; Dietrich, Dietrich 2006, 36; LKA 2012, 73.

<sup>82</sup> Crişan 1973, 52; Crişan 1974, 39; Dietrich, Dietrich 2006, 36; LKA 2012, 73–74.

<sup>83</sup> Dörner 1968, 11–12; Crişan 1973, 52; Crişan 1974, 40–44; RepAR 1998, 29; Dietrich, Dietrich 2006, 36; LKA 2012, 74.

## BIBLIOGRAPHY

- Almássy 1998 K. Almássy, *Kelta temető Tiszavasvári határában*. A Nyíregyházi Jósza András Múzeum Évkönyve XXXIX–XL, 1997–1998, 55–106.
- Almássy 2012 K. Almássy, *A Mátraszőlős-királydombi kelta temető. I. A sírok leírása*. A Nyíregyházi Jósza András Múzeum Évkönyve LIV, 2012, 71–215.
- Banner 1929 J. Banner, *A szőregi La-Tène temető*, Dolgozatok a m. kir. Ferencz József Tudományegyetem Archaeologiai Intézetéből, Szeged V, 1929, 90–114.
- Benadik 1983 B. Benadik, *Maňa. Keltisches gräberfeld*. Fundkatalog. Nitra 1983.
- Benadik et al. 1957 B. Benadik, E. Vlček, C. Ambros, *Keltské pohřebiská na juhozápadnom Slovensku – Keltische Gräberfelder der Südwestslowakei*. Bratislava 1957.
- Berecki 2008 S. Berecki, *The Chronology of the Celtic Discoveries from Transylvania*. In: V. Sîrbu, D.-L. Vaida (Eds.), *Funerary Practices of the Bronze and Iron Ages in Central and South-Eastern Europe, Proceedings of the 9<sup>th</sup> International Colloquium of Funerary Archaeology from Bistrița, May 9<sup>th</sup>–11<sup>th</sup>*. Cluj-Napoca 2008, 47–65.
- Berecki 2015 S. Berecki, *Iron Age Settlement Patterns and Funerary Landscapes in Transylvania (4<sup>th</sup>–2<sup>nd</sup> Centuries BC)*. Târgu Mureș 2015.
- Blăjan 1975 M. Blăjan, *Descoperiri dacice și sarmatice de la Șeitin (jud. Arad)*. Crisia V, 1975, 69–85.
- Brunaux, Rapin 1988 J.-L. Brunaux, A. Rapin, *Gournay. II, Boucliers et lances, dépôts et trophées*. Paris 1988.
- Bujna 1989 J. Bujna, *Das latènezeitliche Gräberfeld bei Dubník. I*. Slovenská Archeológia 37, 2, 1989, 245–354.
- Bujna 2005 J. Bujna, *Kruhový šperk z laténských ženských hrobův na Slovensku*. Nitra 2005.
- Bujna, Romsauer 1983 J. Bujna, P. Romsauer, *Späthallstatt- und frühlatènezeitliches Gräberfeld in Bučany*. Slovenská Archeológia 31, 1983, 277–324.
- Chidioșan, Ignat 1972 N. Chidioșan, D. Ignat, *Cimitirul celtic de la Tărian*. SCIV 23, 4, 1972, 553–579.
- Čižmář 1975 M. Čižmář, *Relativní chronologie keltských pohřebišť na Moravě*. Památky archeologické 66, 2, 1975, 417–437.
- Čižmář 1978 M. Čižmář, *Keltské pohřebišťe v Makotřasích, okres Kladno*. Památky archeologické 69, 1, 1978, 117–144.
- Čižmář, Valentová 1977 M. Čižmář, J. Valentová, *Keltská pohřebišťe na Čáslavsku a Kutnohorsku*. Archeologické Rozhledy XXIX, 1977, 178–196.
- Čižmářová 2011 J. Čižmářová, *Keltská pohřebišťe na Moravě okresy Brno-město a Brno-venkov / Keltische Gräberfelder in Mähren Bezirke Brno-město und Brno-venkov*. Brno 2011.
- Crișan 1973 I. H. Crișan, *Așa numitul mormânt de la Silivaș și problema celui mai vechi grup celtic din Transilvania*. Sargetia X, 1973, 45–76.
- Crișan 1974 I. H. Crișan, *Descoperiri celtice păstrate în Muzeul Județean Arad*. Ziridava III–IV, 1974, 37–86.
- Dietrich, Dietrich 2006 L. Dietrich, O. Dietrich, *Locuirea celtică din Transilvania, Banat și Crișana (stadiul actual al cercetării)*. SCIVA 57, 1–4, 2006, 9–56.
- Dizdar 2013 M. Dizidar, *Zvonimirovo-Veliko polje. Groblje latenske culture / A Cemetery of the La Tène Culture*. Zagreb 2013.
- Dörner 1968 E. Dörner, *Urme ale culturii materiale dacice pe teritoriul arădan*. Arad 1968.
- Drnić 2015 I. Drnić, *La Tène spearheads from south-eastern Pannonia and the northern Balkans*. In: S. Wefers, M. Karwowski, J. Fries-Knoblach, P. Trebsche, P. C. Ramsel (Hrsg.), *Waffen – Gewalt – Krieg, Beiträge zur Internationalen Tagung der AG Eisenzeit und des Institut Archeologii Uniwersytetu Rzeszowskiego – Rzeszów 19.–22. September 2012, Beiträge zur Ur- und Frühgeschichte Mitteleuropas*, 79, 111–126.
- Gedl 1978 M. Gedl, *Gräber der Latènekultur in Kietrz, Bezirk Opole, Beiträge zum Randbereich der Latène-kultur*. Prace Archeologiczne 26, 1978, 9–72.
- Haevernick 1960 Th. E. Haevernick, *Die Glasarmringe und Ringperlen der Mittel- und Spätlatènezeit auf dem Europäischen Festland*. Bonn 1960.
- Hellebrandt 1999 M. Hellebrandt, *Celtic finds from Northern Hungary*, Corpus of Celtic finds in Hungary, vol. III. Budapest 1999.
- Hodson 1968 F. R. Hodson, *The La Tène Cemetery at Münsingen-Rain. Catalogue and relative chronology*. Bern 1968.

- Holodňák 1988 P. Holodňák, *Keltská pohřebiště ve středním Poohří – Keltische Gräberfelder im mittleren Egerflussgebiet*. Památky Archeologické LXXIX, 1988, 117–144.
- Hunyady 1942 I. Hunyady, *Die Kelten im Karpatenbecken. Tafelband – Kelták a Kárpátmedencében. Táblakötet*. Dissertationes Pannonicae, ser. II, no. 18.
- Jerem 1968 E. Jerem, *The Late Iron Age cemetery of Szentlőrinc*. Acta Archaeologica Academiae Scientiarum Hungaricae 20, 1968, 159–208.
- Jovanović 2011 A. Jovanović, *Middle La Tène female grave 56 from Brežice, Slovenia*. In: M. Guštin, M. Jevtić (Eds.), *The Eastern Celts: the communities between the Alps and the Black Sea*. Koper–Beograd 2011, 51–64.
- Kaposvári 1969 Gy. Kaposvári, *A Jászberény–cserőhalmi kelta temető*. Archaeológiai Értesítő 96, 1969, 178–198.
- Karwowski 2004 M. Karwowski, *Latènezeitlicher Glasringschmuck aus Ostösterreich*. Mitteilungen der Prähistorischen Kommission, 55. Wien 2004.
- Krämer 1985 W. Krämer, *Die Grabfunde von Manching und die Latènezeitlichen Flachgräber in Südbayern*. Stuttgart 1985.
- LKA 2012 S. Sievers, O. H. Urban, P. C. Ramsel (Hrsg.), *Lexikon zur Keltischen Archäologie*. Wien 2012.
- Lovas 1939 E. Lovas, *Kelta leletek a győri kálváriai és újszállási temetőkből és Rábatamásiából*. Folia Archaeologica I–II, 1939, 88–96.
- Luca 2006 S. A. Luca, *Descoperiri arheologice din Banatul Românesc. Repertoriu*. Alba Iulia 2006.
- Marion, Guillaumet 2012 S. Marion, J.-P. Guillaumet, *Couteaux, forces et autres instruments dans les sépultures de Ludas*. In: M. Szabó (dir.), *La nécropole celtique à Ludas – Varjú-Dűlő*. Budapest 2012, 189–196.
- Márton 1934 L. Márton, *A korai La Tène sírok leletanyaga*. Dolg. a M. Kir. Ferencz József-Tudományegyetem Archaeológiai Intézetéből. Szeged IX–X, 1–2, 1933–1934, 93–128.
- Mithay 1966 S. Mithay, *Korai kelta sírleletek Borsosgyőrből s Kiskamondról*. A Veszprém Megyei Múzeumok Közleményei 5, 1966, 55–68.
- Möller 2000 Ch. Möller, *Das Grab 13 von Leimersheim, Kr. Germersheim (Pfalz): Ein Beitrag zur Chronologie der Frühlatènezeit*. Archäologisches Korrespondenzblatt 30, 2000, 409–428.
- Németi 1988 I. Németi, *Necropola Latène de la Pişcolt, jud. Satu Mare. I*. Thraco-Dacica IX, 1–2, 1988, 49–73.
- Németi 1989 I. Németi, *Necropola Latène de la Pişcolt, jud. Satu Mare. II*. Thraco-Dacica X, 1–2, 1989, 75–114.
- Németi 1992 I. Németi, *Necropola Latène de la Pişcolt, jud. Satu Mare. III*. Thraco-Dacica XIII, 1–2, 1992, 59–112.
- Pădureanu 1979 E. D. Pădureanu, *Descoperiri arheologice în hotarul comunei Vladimirescu*. Ziridava XI, 1979, 145–180.
- Pădureanu 1985 E. D. Pădureanu, *Contribuții la repertoriul arheologic de pe valea Mureşului Inferior și a Crişului Alb*. Crisia XV, 1985, 27–55.
- Penninger 1972 E. Penninger, *Der Dürrnberg bei Hallein I. Katalog der Grabfunde aus der Hallstatt- und Latènezeit*. München 1972.
- Pétervári 2002 T. Pétervári, *Késő vaskori temetkezés Süllyápról*. Ósrégészeti Levelek 4, 2002, 84–87.
- Pieta 2010 K. Pieta, *Die keltische Besiedlung der Slowakei*. Nitra 2010.
- Ramsel 2002a P. Ramsel, *Das eisenzeitliche Gräberfeld von Pottenbrunn. Forschungsansätze zu wirtschaftlichen Grundlagen und sozialen Strukturen der latènezeitlichen Bevölkerung des Traisental, Niederösterreich*. Fundberichte aus Österreich, Materialhefte A 11, 2002.
- Ramsel 2002b P. Ramsel, *Das latènezeitliche Gräberfeld von Pottenbrunn im Spiegel seiner Fernbeziehungen*. In: A. Lang, V. Salač (Eds.), *Fernkontakte in der Eisenzeit*. Praha 2002, 313–320.
- Ramsel 2011 P. Ramsel, *Das latènezeitliche Gräberfeld von Mannersdorf/Lgb, Flur Reinthal Süd. Studien zu Phänomenen der latènezeitlichen Kulturausprägungen*. Mitteilungen der Prähistorischen Kommission 74, 2011.
- RepAR 1998 *Repertoriul arheologic al Mureşului Inferior. I. Judeţul Arad*. Timişoara 1998.

- Rey 1999 T. Rey, *Das latènezeitliche Gräberfeld von Stettlen-Deisswil BE.*. Jahrbuch der Schweizerischen Gesellschaft für Ur- und Frühgeschichte 82, 1999, 117–148.
- Roska 1942 M. Roska, *Erdély Régészeti Repertóriuma*, I. Cluj-Napoca 1942.
- Roska 1944 M. Roska, *A kelták Erdélyben*. Közlemények az Erdélyi Nemzeti Múzeum Érem- és Régiségtárából IV, 1944, 53–80.
- Rustoiu 2008 A. Rustoiu, *Războinici și societate în aria celtică transilvăneană. Studii pe marginea mormântului cu coif de la Ciumești*. Cluj-Napoca 2008.
- Rustoiu 2011 A. Rustoiu, *The Celts from Transylvania and Eastern Banat and their southern neighbours. Cultural exchanges and individual mobility*, In: M. Guštin, M. Jevtić, (Eds.), *The Eastern Celts: the communities between the Alps and the Black Sea*. Koper-Beograd 2011, 163–170.
- Rustoiu 2013 A. Rustoiu, *Double Costumes in Female Burials from the Carpathian Basin. Comments Regarding Some Garment Assemblages from Fântânele (Romania) and Brežice (Slovenia)*, In: I. V. Ferencz, N. C. Rișcuța, O. T. Bărbat (Eds.), *Archaeological Small Finds and Their Significance, Proceedings of the Symposium: Costume as an identity expression*, Cluj-Napoca 2013, 89–100.
- Rustoiu 2015 A. Rustoiu, *The Celtic Horizon in Transylvania. Archaeological and Historical Evidence*, In: S. Berecki, *Iron Age Settlement Patterns and Funerary Landscapes in Transylvania (4<sup>th</sup>–2<sup>nd</sup> Centuries BC)*. Târgu Mureș 2015.
- Rustoiu, Ursuțiu 2013 A. Rustoiu, A. Ursuțiu, *Celtic colonization in Banat. Comments regarding the funerary discoveries*. In: V. Sîrbu, R. Ștefănescu (eds.), *The Thracians and their Neighbors in the Bronze and Iron Ages. Proceedings of the 12<sup>th</sup> International Congress of Thracology, Târgoviște 10<sup>th</sup>–14<sup>th</sup> September 2013 “Necropolises, Cult places, Religion, Mythology”*. vol. II. Brașov 2013, 323–345.
- Szabó, Tankó 2012 M. Szabó, K. Tankó, *La nécropole celtique à Ludas – Varjú-Dűlő*, In: M. Szabó (dir.), *La nécropole celtique à Ludas – Varjú-Dűlő*. Budapest 2012, 9–152.
- Teleagă 2008 E. Teleagă, *Die La-Tène-zeitlichen Nekropole von Curtuișeni/Érkörtvélyes (Bihar, Rumänien). Der Forschungsstand*. Dacia, N. S., LII, 2008, 85–165.
- Todorović 1972 J. Todorović, *Praistorijska Karaburma, I, necropola mlađeg gvozdenog doba*. Beograd 1972.
- Vaida 2003 L. Vaida, *Cimitirul celtic de la Fântânele (punctul –La Gâța–) – informare privind cercetările arheologice*. Arhiva Someșeană II, 2003, 11–17.
- Vasiliev 1973 V. Vasiliev, *Despre cuțitașele curbe din Hallstatt-ul târziu*. Acta Mvsei Napocensis X, 1973, 523–527.
- Viollier 1916 D. Viollier, *Les sépultures du second Âge de Fer sur le plateau suisse*. Genève 1916.
- Waldhauser 1998 J. Waldhauser, *Die Goldfingerringe von Münsingen-Rain und ihre Vergleichsstücke aus Flachgräberfeldern im Gebiet zwischen dem schweizerischen Mittelland und dem Karpatenbecken*. In: F. Müller (Hrsg.), *Münsingen-Rein, ein Markstein der keltischen Archäologie*. Schriften des Bernischen Historischen Museums, Bd. 2, 1998, 85–121.
- Zirra 1968 V. Zirra, *Un cimitir celtic din nord-vestul României*. Baia Mare 1968.
- Zirra 1971 V. Zirra, *Beiträge zur Kenntnis des keltischen Latène in Rumänien*. Dacia N. S., XV, 1971, 171–238.
- Zirra 1980 V. Zirra, *Locuiri din a doua epocă a fierului în nord-vestul României (Așezarea contemporană cimitirului La Tène de la Ciumești și habitatul indigen de la Berea, jud. Satu Mare)*. StCom Satu Mare IV, 1980, 39–84.

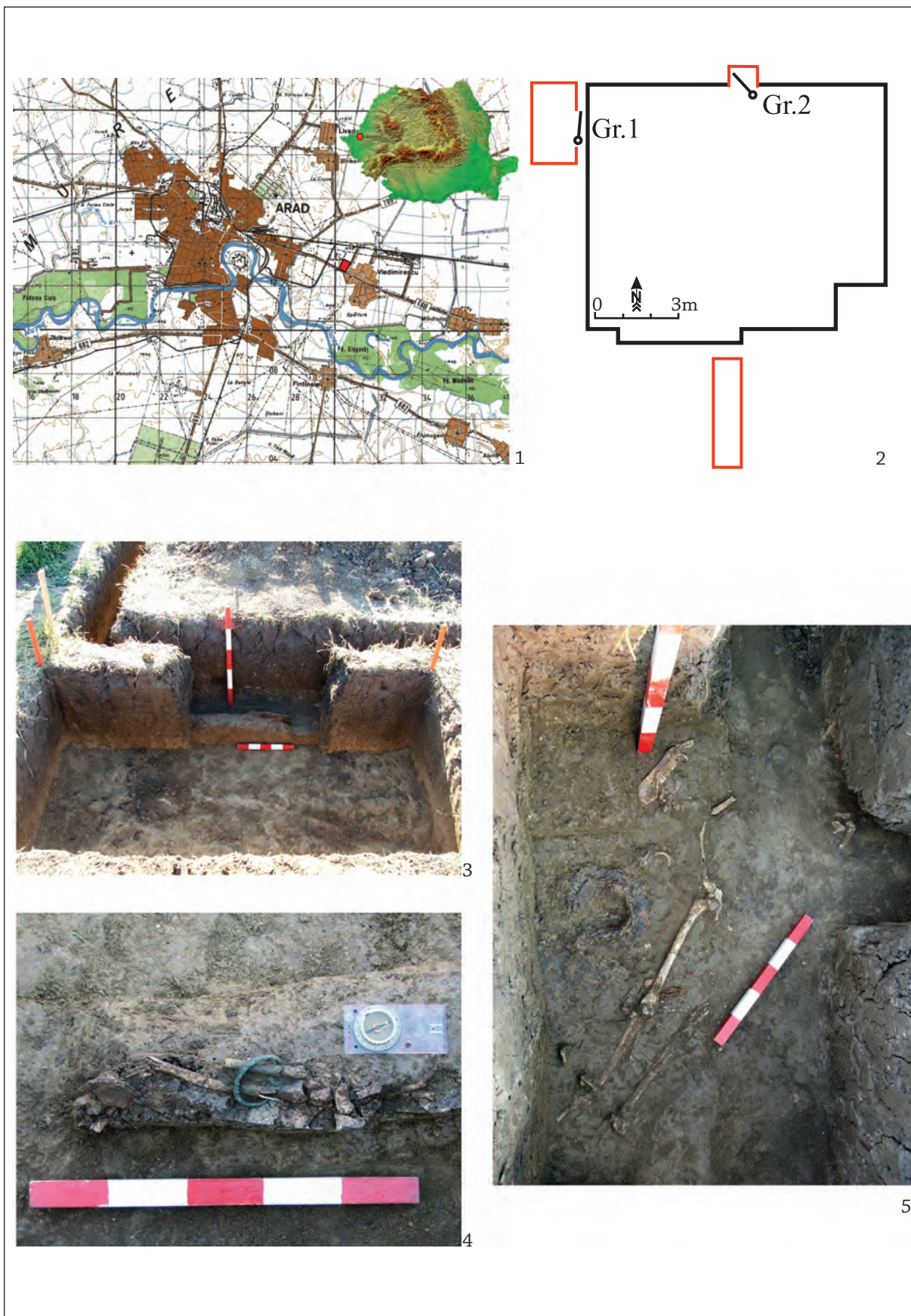


Plate 1. 1. Location of the site; 2. The plan of the building and the graves; 3–4. Grave no. 1; 5. Grave no. 2.

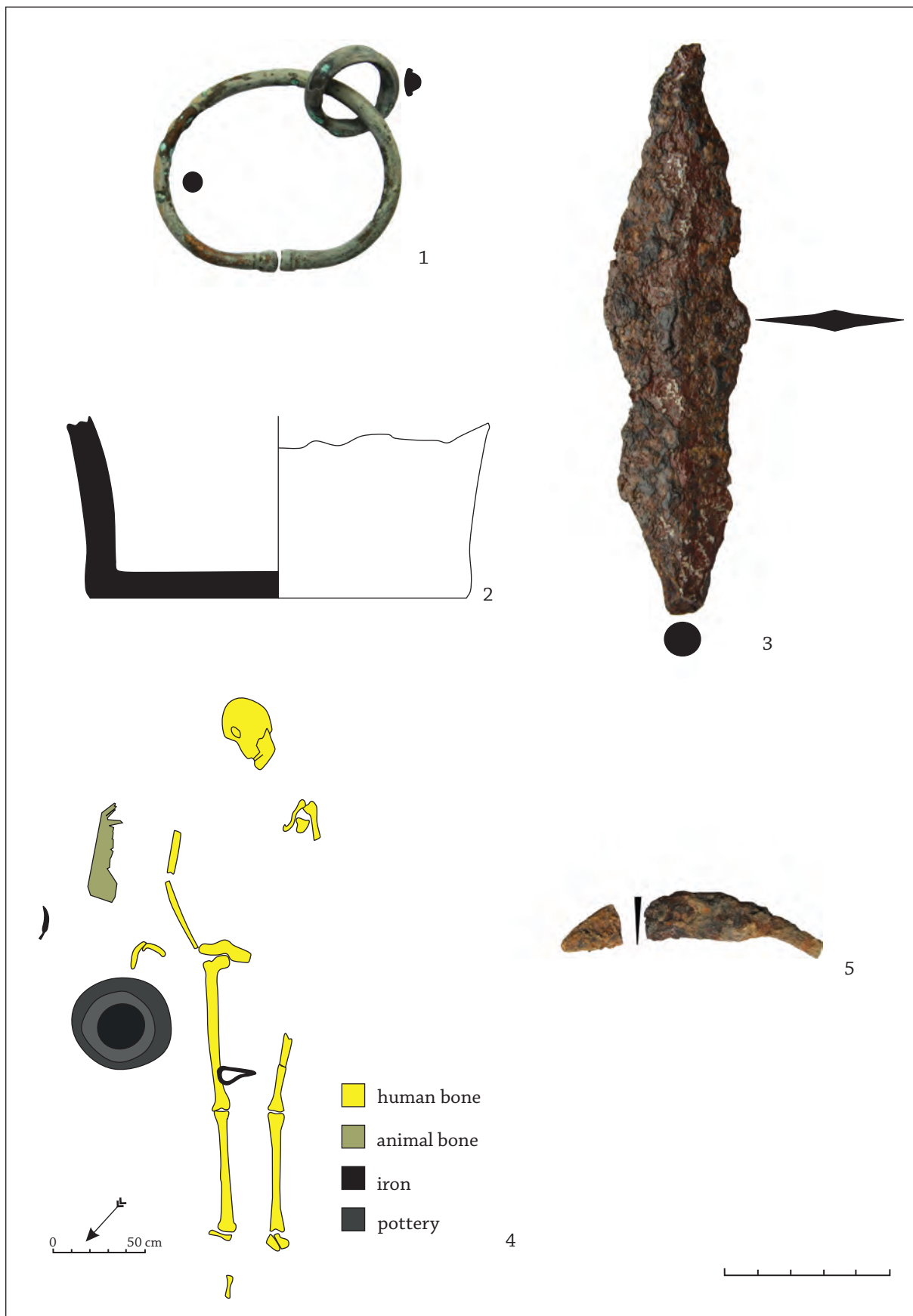


Plate 2. 1–3. Inventory of grave no. 1; 4. Plan of grave no. 2; 5. Iron knife from grave no. 2.



# Abbreviations

Acta Ant et Arch Suppl	Acta Antiqua et Archaeologica Supplementum. Szeged.
AAC	Acta Archaeologica Carpathica. Krakow.
ACMIT	Anuarul Comisiunii monumentelor istorice. Secția pentru Transilvania. Cluj.
ActaArchHung	ActaArchHung Acta Archaeologica Academiae Scientiarum Hungaricae. Budapest.
AEM	Archäologische Epigraphische Mitteilungen aus Österreich-Ungarn.
AIIA Cluj	Anuarul Institutului de Istorie și Arheologie. Cluj.
AMP	Acta Musei Porolissensis. Zaláu.
ATF	Acta Terrae Fogarasiensis. Făgăraș.
ATS	Acta Terrae Septemcastrenses. Sibiu.
Agria	Agria. Annales Musei <i>Agriensis</i> . Az egri Dobó István Vármúzeum évkönyve. Eger.
AnB S.N.	Analele Banatului. Timișoara.
ArchÉrt	Archaeologiai Értesítő. A Magyar Régészeti és Művészettörténeti Társulat tudományos folyóirata. Budapest.
ArchJug	Archaeologia Iugoslavica
Arh. Pregled	Arheološki Pregled. Arheološko Društvo Jugoslavije. Beograd.
AM	Arheologia Moldovei. Iași.
AMN	Acta Musei Napocensis. Cluj-Napoca.
ArchRozhl	Archeologické Rozhledy. Praga.
ASMB	Arheologia Satului Medieval din Banat. Reșița 1996.
BAM	Brvkenthal Acta Mvsei. Sibiu.
BAR Int. Ser.	British Archaeological Reports. International Series. Oxford.
BCMI	Buletinul Comisiunii Monumentelor Istorice.
BerRGK	Bericht der RömischGermanischen Kommission, Frankfurt a. Main.
BHAB	Bibliotheca Historica et Archaeologica Banatica. Timișoara.
BMB. SH	Biblioteca Muzeului Bistrița. Seria Historica. Bistrița Năsăud.
BMÉ	Bihari Múzeum Évkönyve
BMI	Buletinul Monumentelor Istorice, București.
BMN	Bibliotheca Musei Napocensis. Cluj-Napoca.
BMMK	A Békés Megyei Múzeumok Közleményei. Békéscsaba.
BMMN	Buletinul Muzeului Militar Național, București.
BThr	Bibliotheca Thracologica. Institutul Român de Tracologie, București.
CAH	Communicationes Archaeologicae Hungariae. Budapest.
Carpica	Carpica. Muzeul Județean de Istorie și Arheologie Bacău. Bacău.
CAMNI	Cercetări Arheologice. Muzeul de Istorie al R. S. România/Muzeul Național de Istorie. București.
CCA	<i>Cronica cercetărilor arheologice (din România)</i> , 1983–1992 <i>sqq.</i> (și în variantă electronică pe <a href="http://www.cimec.ro/scripts/arh/cronica/cercetariarh.asp">http://www.cimec.ro/scripts/arh/cronica/cercetariarh.asp</a> ).
CRSCRCR	Coins from Roman sites and collections of Roman coins from Romania. Cluj-Napoca.
Dacia N.S.	Dacia. Revue d'archéologie et d'histoire ancienne. Nouvelle serie. București.
Danubius	Danubius – Revista Muzeului de Istorie Galati. Galați.
DDME	A Debreceni Déri Múzeum Évkönyve. Debrecen.
DolgCluj	Dolgozatok az Erdélyi Nemzeti Érem- és Régiségtárából, Klozsvár (Cluj).
DolgSzeg	Dolgozatok. Arbeiten des Archäologischen Instituts der Universität. Szeged.
EphNap	Ephemeris Napocensis. Cluj-Napoca.
FADDP/GMADP	Führer zu archäologischen Denkmälern in Dacia Porolissensis/Ghid al monumentelor arheologice din Dacia Porolissensis.

FolArch	Folia Archaeologica. Budapest.
Forsch. u. Ber. z. Vor- u. Frühgesch. BW	Forschungen und Berichte zur Vor- und Frühgeschichte in Baden-Württemberg.
GPSKV	Gradja za proučavanje spomenika kulture Vojvodine. Novi Sad.
GSAD	Glasnik Srpskog Arheološkog Društva. Beograd.
HOMÉ	A Herman Ottó Múzeum Évkönyve. Miskolc.
HTRTÉ	Hunyadvármegye Történelmi és Régészeti Társulat Évkönyve
JAMÉ	A nyíregyházi Jósa András Múzeum Évkönyve. Nyíregyháza.
JahrbuchRGZM	Jahrbuch des RömischGermanischen Zentralmuseums Mainz.
Lohanul	Lohanul. Revistă culturală științifică. Huși.
MCA	Materiale și Cercetări Arheologice. București.
MCA-S.N.	Materiale și Cercetări Arheologice-Serie Nouă. București.
MA	Memoria Antiquitatis. Complexul Muzeal Județean Neamț. Piatra Neamț.
MFME	A Móra Ferenc Múz. Évkönyve. Szeged.
MFME StudArch	A Móra Ferenc Múzeum Évkönyve, Studia Archaeologica. Szeged.
MN	Muzeul Național. București.
Opuscula Hungarica	Opuscula Hungarica. Budapest.
OTÉ	Orvos- Természettudományi Értesítő, a Kolozsvári Orvos-Természettudományi Társulat és az Erdélyi Múzeum-Egylet Természettudományi Szakosztálya.
Palaeohistorica	Acta et Communicationes Instituti Archaeologici Universitatis Groninganae.
PamArch	Památky Archeologické. Praha.
Past and Present	Past and Present. Oxford.
PIKS/PISC	Die Publikationen des Institutes für klassische Studien/ Publicațiile Institutului de studii clasice. Cluj-Napoca.
PBF	Praehistorische Bronzefunde. Berlin.
PMÉ	Acta Musei Papensis – Pápai Múzeumi Értesítő.
PZ	Prähistorische Zeitschrift. Berlin.
Rev. Muz.	Revista Muzeelor, București.
RIR	Revista Istorică Română.
RMM-MIA	Revista Muzeelor și Monumentelor. seria Monumente istorice și de artă. București.
RMMN	Revista Muzeului Militar Național. București.
Ruralia	Ruralia. Památky Archeologické – Supplementum. Praha.
RVM	Rad Vojvodjanskih Muzeja, Novi Sad.
SCIV(A)	Studii și Cercetări de Istorie Veche. București.
SCN	Studii și Cercetări Numismatice. București.
SlovArch	Slovenská Archeológia. Nitra.
SIA	Studii de Istoria Artei. Cluj Napoca.
SIB	Studii de istorie a Banatului. Timișoara.
SKMÉ	A Szántó Kovács János Múzeum Évkönyve, Orosháza.
SMIM	Studii și Materiale de Istorie Medie. București.
SMMA	Szolnok Megyei Múzeumi Adattár. Szolnok.
SMMIM	Studii și Materiale de Muzeografie și Istorie Militară. București.
Starinar	Starinar. Arheološki Institut. Beograd.
StCl	Studii Clasice, București.
StComBrukenthal	Studii și comunicări. Sibiu.
StudArch	Studia Archaeologica. Budapest.
StudCom	Studia Comitatus. Szentendre.
StudUnivCib	Studia Universitatis Cibiniensis. Sibiu.
StudCom – Vrancea	Studii și Comunicări. Muzeul Județean de Istorie și Etnografie Vrancea. Focșani.
StudŽvest	Študijne Zvesti Arheologického Ústavu Slovenskej Akadémie Vied. Nitra.
Symp. Thrac.	Symposia Thracologica. București.
Tempora Obscura	Tempora Obscura. Békéscsaba 2012.
Tibiscus	Tibiscus. Timișoara.
VAH	Varia Archaeologica Hungarica. Budapest.

VMÉ  
Ziridava  
ZM  
ZSA

A Vas megyei Múzeumok Értesítője  
Ziridava. Arad.  
A Vas megyei Múzeumok Értesítője  
Ziridava Studia Archaeologica. Arad.