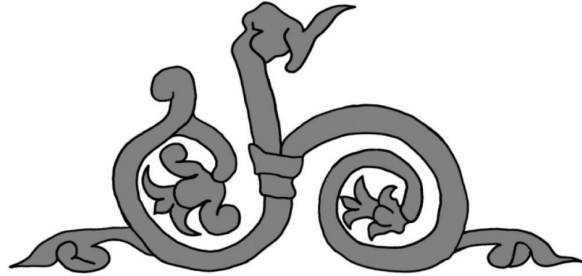


ZIRIDAVA
STUDIA ARCHAEOLOGICA

30
2016

MUSEUM ARAD



ZIRIDAVA
STUDIA ARCHAEOLOGICA

30
2016

Editura MEGA

Cluj-Napoca
2016

MUSEUM ARAD

EDITORIAL BOARD

Editor-in-chief: Peter Hgel.

Editorial Assistants: Florin Mrginean, Victor Sava.

EDITORIAL ADVISORY BOARD

V. Brc (Cluj-Napoca, Romania), M. Crciumaru (Trgovite, Romania), S. Coci (Cluj-Napoca, Romania), F. Gogltan (Cluj-Napoca, Romania), S. A. Luca (Sibiu, Romania), V. Kulcsr (Szeged, Hungary), M. Takcs (Budapest, Hungary), J. O'Shea (Michigan, USA), K. Z. Pinter (Sibiu, Romania), I. Stanciu (Cluj-Napoca, Romania), I. Szatmri (Bkcsaba, Hungary).

In Romania, the periodical can be obtained through subscription or exchange, sent as post shipment, from Museum Arad, Arad, Piata G. Enescu 1, 310131, Romania.
Tel. 0040-257-281847.

ZIRIDAVA STUDIA ARCHAEOLOGICA

Any correspondence will be sent to the editor:
Museum Arad
Piata George Enescu 1, 310131 Arad, RO
e-mail: ziridava2012@gmail.com

The content of the papers totally involve the responsibility of the authors.

Layout: Francisc Baja, Florin Mrginean, Victor Sava

ISSN 2392-8786



EDITURA MEGA | www.edituramega.ro
e-mail: mega@edituramega.ro

Contents

Octavian Cristian Rogozea, Alexandru Berzovan, Eugen Pădurean Contribution to the Repertory of Late Neolithic Settlements on the Territory of Arad County.....	7
Mária Bondár A new Bronze Age wagon model from Szombathely-Motel.....	27
Florin Gogâltan, Victor Sava An Older Bronze Age Funerary Discovery from Zimandu Nou (Arad County).....	43
Luminița Andreica-Szilagy Anthropological Analysis of Two Cremation Graves Discovered in the Settlement of Zimandu Nou (Arad County).....	55
Eugen Pădurean, Alexandru Berzovan Prehistoric Vestiges on Highiș Peak in Zarandului Mountains (Municipality of Tîrnova, Arad County).....	61
Victor Sava The Archaeological Site of Felnac “Complexul Zootehnic” (Arad County). Discussions on the Late Bronze Age Settlement and Cemetery.....	69
Octavian Cristian Rogozea, Răzvan Ioan Pinca Two Bronze Items Discovered by Chance: the Bracelet from Jupa (Caraș-Severin County) and the Long Dagger from Găvojdia (Timiș County).....	109
Sándor Berecki Two Late Iron Age Graves from Vladimirescu.....	115
Cristina Bodó, Valeriu Sîrbu The Fortifications in Câmpuri Surduc in the Context of the Dacian Discoveries made in the Mureș Gorge (the Șoimuș – Zam Area).....	125
Alexandru Berzovan On a Presumed Roman Military Expedition in the Valley of River Marisos at the Turn of the First Century A.D.....	141
Britta Burkhardt Reflecting on the Typological Analysis of Roman Provincial Baths and Bathhouses	149
Dan Băcuet-Crișan, Sanda Băcuet-Crișan Old and New Archeological Researches Regarding the Early Medieval Habitat in Sylvania Basin.....	159
Aurel Dragotă Typology of Crescent-Shaped Pendants.....	171
Silviu Oța, Andra Samson Several Observations on the Medieval Battle Knives Found on the Territory of Romania (The MNIR Collection).....	189
Florin Mărginean Ottoman-Turkish Archaeological Research in Arad County. Turkish Strongholds in the Second Half of the 16 th Century between Mureș and Crișul Alb (The Beginning of a thematic Approach).....	211
Călin Ghemiș From the History of Archaeological Researches in Crișana: Dr. Ernest Andrassy (I).....	229
Abbreviations.....	249

Two Bronze Items Discovered by Chance: the Bracelet from Jupa (Caraș-Severin County) and the Long Dagger from Găvojdia (Timiș County)*

Octavian Cristian Rogozea, Răzvan Ioan Pinca

Abstract: Ground archaeological researches performed in the administrative borders of the settlement of Jupa have led to the discovery of a bronze bracelet that can be dated, on the basis of analogies, to the period between the Late Bronze Age and the Early Iron Age. Another interesting item, namely a long bronze dagger, was discovered in the border of the settlement of Găvojdia. Unfortunately, this item also lacks a clear archaeological context, as it was discovered in a sand quarry on the southern bank of the Timiș.

Keywords: long bronze dagger, River Timiș, bronze bracelet, stray find, Bronze Age.

The intensification, in the last years, of field researches aimed at identifying and especially mapping the sites in certain micro-regions that were apparently “exhausted” from an archaeological perspective, besides certain private citizens developing civic initiatives, has led to the enrichment of the archaeological patrimony and implicitly to the knowledge of proto-historical communities in the area of River Timiș.

1. Jupa Neighborhood (city of Caransebeș, Caraș-Severin County)

The settlement of Jupa is well known in archaeological literature due to the Roman fort¹ and other discoveries associated to the Roman Era², but there are also mentions in its territory of sites belonging to the Paleolithic³, the Late Neolithic⁴, the Early Eneolithic⁵, the Bronze Age⁶, the First Iron Age⁷ and the Middle Ages⁸.

In the context of the ground researches performed in the beginning of 2015 by a team of researchers from Romania and Poland⁹ a bronze prehistoric bracelet was also found¹⁰. The discovery was made in an area located 1.8 km north of the Orthodox church in Jupa, 1.9 km south-east of the Orthodox church in Zăgujeni, 3.78 km south-west of the Orthodox church in Ciuta and 701 m west of the current course of River Timiș (Fig. 1/1; Fig. 1/3a-b), on the spot with the following geographic coordinates: 45°28'18.21"N 22°10'40.79"E (GPS) / 279521.98810 long, 445221.72633 lat (Stereo 70).

The bronze bracelet was discovered on the surface of a plowed pot; it was probably dislocated by the agricultural works, as indicated by the fresh scratches on its surface. Morphologically, the bracelet consists of three coils, is circular in shape and its maximum diameter measures ca. 9–9.3 cm, with the thickness of 0.7–0.8 cm. The item's surface is decorated with parallel incisions in groups of three, placed on the central coil. On the same coil, on its outer part, there is also an incision in the shape of a

* English translation: Ana M. Gruia.

¹ Benea, Bona 1994 with the bibliography; Cîntar 2015.

² Timoc *et al.* 2003.

³ Petrovsky 1977, 438; Munteanu, Petrovsky 1981, 325.

⁴ Luca 1993; Drașovean 1996, 111.

⁵ Oprinescu 1981, 49; Lazarovici 1983, 15; Diaconescu 2008, 83.

⁶ Petrovsky 1977, 438; Bader 1983, 12, Taf. 1/2; Gumă 1993, 254.

⁷ Gumă 1993, 291.

⁸ Țeicu 1998, 127.

⁹ Pisz, Timoc 2015b.

¹⁰ Pisz, Timoc 2015a, 10, fig. 8; we hereby thank researcher Călin Timoc for kindly allowing us to publish the item. The bracelet is preserved at the Ethnography and History Museum of the Caransebeș Border Regiment (lacking an inventory number).

lozenge with two extended sides that intersect, framed by two, respectively three parallel incisions. In section the item is almost circular (the inner side of slightly flattened). The outer coils grow gradually narrower towards the ends (Fig. 2/1).

An item with similar morphology, though undecorated, was found in Beba Veche¹¹. Items with similar decorations (but not identical) and close morphology (closed or slightly overlapping ends) are known in the vicinity, in Ticvaniul Mare¹²; the latter item is dated to Ha. A¹³. The presence of two bronze deposits in the proximal area, Zăgujeni-1 (located just 1.3 km westwards, integrated to the Uriu-Domănești series¹⁴ and Zăgujeni-2 (discovered on Dealul Mare, located 2.8 km westwards) attributed to the Cincu-Suseni series¹⁵ besides other discoveries in the area dated to the interval Bz. D. – Ha. A. provide further arguments in support of the dating of the bracelet from Jupa during this interval. Still, it very difficult to make a strict cultural determination of the item in the absence of a clear archaeological context or at least of pottery. Plurispiralic bracelets, decorated or not, are known from the Early Bronze, the Middle Bronze, the Late Bronze, but also from the subsequent eras¹⁶.

2. Găvojdia (municipality of Găvojdia, Timiș County)

The settlement of Găvojdia is located on the western bank of River Timiș, just 12 km south-east of the city of Lugoj. The location of the modern settlement near the water course mentioned above has led to the development of an actual “industry” of exploiting sand, ballast and other rocks. The prejudice caused by such exploitations is sometimes compensated, to a small degree, by the discovery of interesting objects, such as the Greek-Illyrian helmet found in the summer of 2003 north of the settlement of Găvojdia, upstream a ballast quarry¹⁷ or the bronze dagger discovered in 2015 that is of interest here¹⁸.

The item is relatively well preserved, covered with patina. Due to its organic nature (made of wood) the handle has not been preserved. The blade of the dagger, measuring 34 cm in length, is in the shape of a prolonged triangle with central rib. The maximum thickness of the blade (measured on the rib) is of 3.39–3.41 mm. In the upper part the dagger has 5 perforations of ca. 5 mm. One of them is broken. The upper perforation, the one in continuation of the rib, shows traces of wear, i.e. a small fissure that runs towards the outside of the item and a small barb. The perforations are almost circular in shape (irregular). The current weight of the long dagger is 173 g (Fig. 2/2; Fig. 3).

The lack of a clear context of discovery somewhat hinders the finding of information to allow for the item to be determined chronologically more precisely, or to be attributed ethno-culturally more exactly. The best analogy for this item is the long dagger discovered in Hungary, in Csanyteleck¹⁹. From a typological perspective, the item can be included in variant 3 of long daggers (*Langdolche mit griffplattenfortsatz*) according to the typology created by Tibor Kemenczei for such items²⁰. On the basis of the morphological characteristics and of the analogies we attribute the dagger, with due caution due to the absence of an archaeological context, to the Early or Middle Bronze Age.

For the territory of Romania, the discovery of some dagger in water or in the proximity of water courses is not unusual, as ca. 16 items of this type were found in such contexts²¹.

We hope that the two newly discovered items contribute to a small degree to the understanding process of the role played in this area by River Timiș. The analysis of the spatial distribution of deposits and isolated items that can be dated to the interval Bz. D. – Ha. A. (Fig. 1/2) confirms, to the current state or research at least, that the area was intensely inhabited or at least transited.

¹¹ Gogăltan 1999, 163, Fig. 28/5.

¹² Petrescu-Dâmbovița 1998, 33/107, Taf. 164/400.

¹³ Petrescu-Dâmbovița 1998, 37; Gumă 1993, 296/ 151.

¹⁴ Gumă, Popescu, 1992.

¹⁵ Săcărin, Negrei 2013.

¹⁶ Gogăltan 1999, 163.

¹⁷ Medeleț, Cedică 2004, 97; Luca 2006, 119; Sârbu 2012, 33; Belčić Kavur 2012, 51, fig. 11/3.

¹⁸ The dagger is preserved at the History, Ethnography and Art Museum in Lugoj (lacking an inventory number).

¹⁹ Kemenczei 1988, taf. 2/19.

²⁰ Kemenczei 1988, 12.

²¹ Kacsó 2014, 156.

Octavian Cristian Rogoza

Western University, Timișoara
Timișoara, ROU
rogozeaoctavian@yahoo.com

Răzvan Ioan Pinca

History, Ethnography and Art Museum, Lugoj
Lugoj, ROU
razvanioanpinca@gmail.com

BIBLIOGRAPHY

- Bader 1983 T. Bader, *Evoluția fibulelor pe teritoriul României de la sfârșitul epocii bronzului până în perioada Hallstatului târziu*. Thraco-Dacica IV, 1983, 1–2, 12–22.
- Belčić Kavur 2012 M. Belčić Kavur, *Illyrian Helmets from Bosnia and Herzegovina*. Arheologija 53, 2012, 35–136.
- Benea, Bona 1994 D. Benea, P. Bona, *Tibiscum*. București 1994.
- Cîntar 2015 A. Cîntar, *Aplicabilitatea sistemelor grafice 2d și 3d în studierea evoluției arhitectonice a așezării civile de la Tibiscum*. Szeged 2015.
- Diaconescu 2008 D. Diaconescu, *Repertoriul descoperirilor aparținând culturii Tiszapolgár de pe teritoriul României*. Corviniana XII, 2008, 67–121.
- Drașovean 1996 F. Drașovean, *Cultura Vinča târzie (faza C) în Banat*. Timișoara 1996.
- Gogâltan 1999 F. Gogâltan, *Bronzul timpuriu și mijlocii în Banatul Românesc și pe cursul Inferior al Mureșului*. Timișoara 1999.
- Gumă 1993 M. Gumă, *Civilizația primei epocii a fierului în sud-vestul României*. București 1993.
- Gumă, Popescu 1992 M. Gumă, O. Popescu, *Un nou depozit de bronzuri descoperit în zona Caransebeșului*. Thraco-Dacica XIII, 1–2, 1992, 53–58.
- Kacsó 2014 C. Kacsó, *Spada de bronz de la Sighetul Marmației. Contribuții la cunoașterea Gewässerfunde ale Epocii Bronzului din România*. Terra Sebus VI, 2014, 147–182.
- Kemenczei 1988 T. Kemenczei, *Die Schwerter in Ungarn, I (Griffplatten-, Griffangel- und Griffzungenschwerter)*. Prähistorische Bronzefunde, Abteilung IV, Band 6, C. H. Beck'sche Verlagsbuchhandlung, München, 1988.
- Lazarovici 1983 G. Lazarovici, *Principalele probleme ale culturii Tiszapolgár în România*. AMN XX, 1983, 3–31.
- Luca 1993 S. A. Luca, *Așezarea neolitică de la Jupa-Sud Caraș-Severin*. Tibiscum VIII, 1993, 27–33.
- Luca 2006 S. A. Luca, *Descoperiri arheologice din Banatul Românesc. Repertoriu*. Sibiu 2006.
- Medeleț, Cedică 2004 F. Medeleț, V. Cedică, *Coiful greco-ilir de la Găvojdia (jud. Timiș)*. AB S. N. X-XI, 1, 2004, 97–100.
- Munteanu, Petrovsky 1981 I. Munteanu, R. Petrovsky, *Noi descoperiri arheologice în județul Caraș-Severin. Studii și comunicări de etnografie-istorie Caransebeș IV*, 1981, 322–329, 325.
- Oprinescu 1981 A. Oprinescu, *Răspândirea culturii Tiszapolgár-Românești în Banat*. Banatica VI, 1981, 43–49.
- Petrescu-Dâmbovița 1998 M. Petrescu-Dâmbovița, *Der Arm-und Beinschmuck in Rumänien*. Prähistorische Bronze Funde, 4, Franz Steiner Verlag Stuttgart, 1998.
- Petrovsky 1977 R. Petrovsky, *Contribuții la repertoriul arheologic al localităților județului Caraș-Severin, din paleolitic până în secolul al V-lea î.e.n. (partea III)*. Banatica IV, 1977, 437–462.
- Sîrbu 2012 V. Sîrbu, *La casque gréco-illyrien a représentations figuratives (IVe-Ve siècles AV. J.-C.) de Găvojdia, dep. de Timiș*. AB S. N. XX, 2012, 33–56.
- Timoc et al. 2003 C. Timoc, D. Micle, A. Maniu, *Construcția romană de la Halta Tibiscum*. Patrimonium Banaticum II, 2003, 101–108.
- Pisz, Timoc 2015a M. Pisz, C. Timoc, *Tibiscum Project-March 2015*. Preliminary Report, 2015, manuscript.
- Pisz, Timoc 2015b M. Pisz, C. Timoc, *All roads lead to Tibiscum-Results and perspectives of the non-destructive landscape survey of the roman fort and its surroundings*. In: S. Fortiu, A. Stăvilă (Eds.), *Arheovest*, III, 1, In memoriam Florin Medeleț. Szeged 2015, 441–445.
- Săcărin, Negrei 2013 C. Săcărin, D. Negrei, *Bronze Depozit from Zăgujeni (II), Caraș-Severin County*. Tibiscum III, New Series, 2013, 157–194.
- Țeicu 1998 D. Țeicu, *Banatul montan în Evul Mediu*. Timișoara 1998.

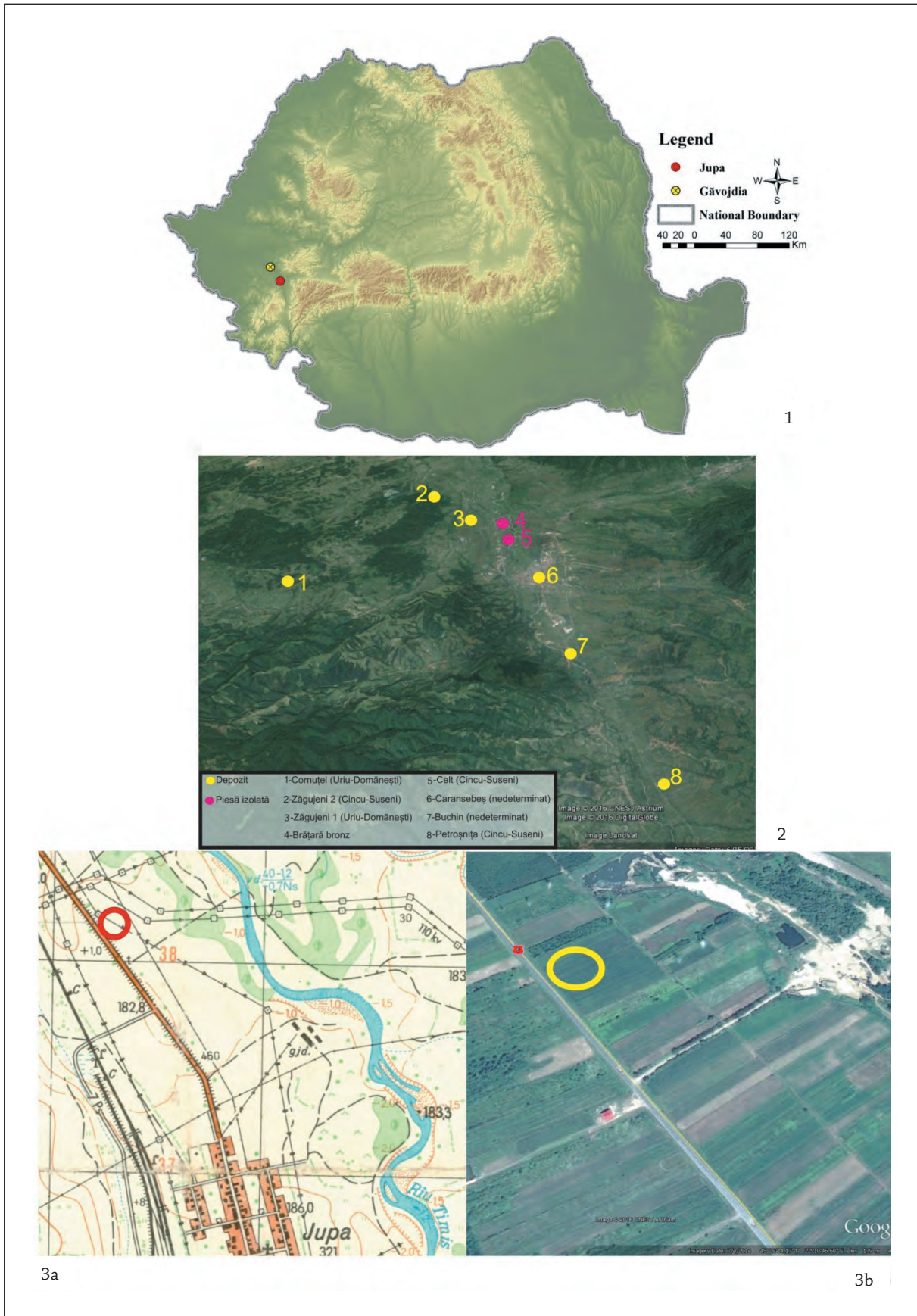


Fig. 1. 1. Localization of the discoveries on the map of Romania; 1. 2. Distribution of discoveries dated to Bz. D – Ha. A from the area of Caransebeș; 1. 3a. Discovery area of the bracelet marked on the Military Topographic Map of 1975; 1. 3b. Discovery area of the bracelet marked on a *Google Earth* satellite image.

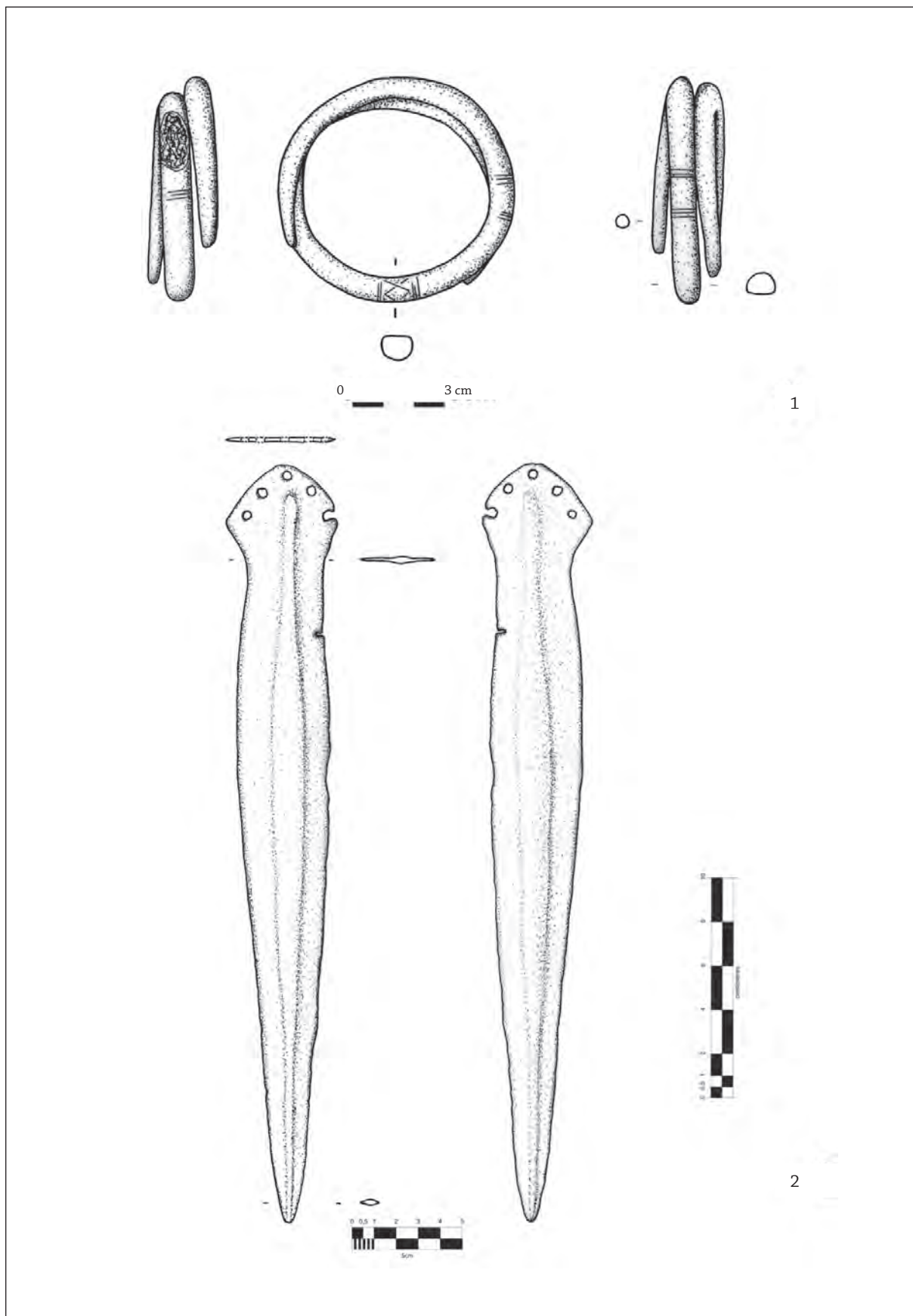


Fig. 2. 1. The bronze bracelet discovered in Jupa; 2. 2. The dagger from Gävojdia.



Fig 3. The long dagger discovered in Gävojdia, with details (photograph).

Abbreviations

Acta Ant et Arch Suppl	Acta Antiqua et Archaeologica Supplementum. Szeged.
AAC	Acta Archaeologica Carpathica. Krakow.
ACMIT	Anuarul Comisiunii monumentelor istorice. Secția pentru Transilvania. Cluj.
ActaArchHung	ActaArchHung Acta Archaeologica Academiae Scientiarum Hungaricae. Budapest.
AEM	Archäologische Epigraphische Mitteilungen aus Österreich-Ungarn.
AIIA Cluj	Anuarul Institutului de Istorie și Arheologie. Cluj.
AMP	Acta Musei Porolissensis. Zaláu.
ATF	Acta Terrae Fogarasiensis. Făgăraș.
ATS	Acta Terrae Septemcastrenses. Sibiu.
Agria	Agria. Annales Musei <i>Agriensis</i> . Az egri Dobó István Vármúzeum évkönyve. Eger.
AnB S.N.	Analele Banatului. Timișoara.
ArchÉrt	Archaeologiai Értesítő. A Magyar Régészeti és Művészettörténeti Társulat tudományos folyóirata. Budapest.
ArchJug	Archaeologia Iugoslavica
Arh. Pregled	Arheološki Pregled. Arheološko Društvo Jugoslavije. Beograd.
AM	Arheologia Moldovei. Iași.
AMN	Acta Musei Napocensis. Cluj-Napoca.
ArchRozhl	Archeologické Rozhledy. Praga.
ASMB	Arheologia Satului Medieval din Banat. Reșița 1996.
BAM	Brvkenthal Acta Mvsei. Sibiu.
BAR Int. Ser.	British Archaeological Reports. International Series. Oxford.
BCMI	Buletinul Comisiunii Monumentelor Istorice.
BerRGK	Bericht der RömischGermanischen Kommission, Frankfurt a. Main.
BHAB	Bibliotheca Historica et Archaeologica Banatica. Timișoara.
BMB. SH	Biblioteca Muzeului Bistrița. Seria Historica. Bistrița Năsăud.
BMÉ	Bihari Múzeum Évkönyve
BMI	Buletinul Monumentelor Istorice, București.
BMN	Bibliotheca Musei Napocensis. Cluj-Napoca.
BMMK	A Békés Megyei Múzeumok Közleményei. Békéscsaba.
BMMN	Buletinul Muzeului Militar Național, București.
BThr	Bibliotheca Thracologica. Institutul Român de Tracologie, București.
CAH	Communicationes Archaeologicae Hungariae. Budapest.
Carpica	Carpica. Muzeul Județean de Istorie și Arheologie Bacău. Bacău.
CAMNI	Cercetări Arheologice. Muzeul de Istorie al R. S. România/Muzeul Național de Istorie. București.
CCA	<i>Cronica cercetărilor arheologice (din România)</i> , 1983–1992 <i>sqq.</i> (și în variantă electronică pe http://www.cimec.ro/scripts/arh/cronica/cercetariarh.asp).
CRSCRCR	Coins from Roman sites and collections of Roman coins from Romania. Cluj-Napoca.
Dacia N.S.	Dacia. Revue d'archéologie et d'histoire ancienne. Nouvelle serie. București.
Danubius	Danubius – Revista Muzeului de Istorie Galati. Galați.
DDME	A Debreceni Déri Múzeum Évkönyve. Debrecen.
DolgCluj	Dolgozatok az Erdélyi Nemzeti Érem- és Régiségtárából, Klozsvár (Cluj).
DolgSzeg	Dolgozatok. Arbeiten des Archäologischen Instituts der Universität. Szeged.
EphNap	Ephemeris Napocensis. Cluj-Napoca.
FADDP/GMADP	Führer zu archäologischen Denkmälern in Dacia Porolissensis/Ghid al monumentelor arheologice din Dacia Porolissensis.

FolArch	Folia Archaeologica. Budapest.
Forsch. u. Ber. z. Vor- u. Frühgesch. BW	Forschungen und Berichte zur Vor- und Frühgeschichte in Baden-Württemberg.
GPSKV	Gradja za proučavanje spomenika kulture Vojvodine. Novi Sad.
GSAD	Glasnik Srpskog Arheološkog Društva. Beograd.
HOMÉ	A Herman Ottó Múzeum Évkönyve. Miskolc.
HTRTÉ	Hunyadvármegye Történelmi és Régészeti Társulat Évkönyve
JAMÉ	A nyíregyházi Jósa András Múzeum Évkönyve. Nyíregyháza.
JahrbuchRGZM	Jahrbuch des RömischGermanischen Zentralmuseums Mainz.
Lohanul	Lohanul. Revistă cultural științifică. Huși.
MCA	Materiale și Cercetări Arheologice. București.
MCA-S.N.	Materiale și Cercetări Arheologice-Serie Nouă. București.
MA	Memoria Antiquitatis. Complexul Muzeal Județean Neamț. Piatra Neamț.
MFMÉ	A Móra Ferenc Múz. Évkönyve. Szeged.
MFMÉ StudArch	A Móra Ferenc Múzeum Évkönyve, Studia Archaeologica. Szeged.
MN	Muzeul Național. București.
Opuscula Hungarica	Opuscula Hungarica. Budapest.
OTÉ	Orvos- Természettudományi Értesítő, a Kolozsvári Orvos-Természettudományi Társulat és az Erdélyi Múzeum-Egylet Természettudományi Szakosztálya.
Palaeohistorica	Acta et Communicationes Instituti Archaeologici Universitatis Groninganae.
PamArch	Památky Archeologické. Praha.
Past and Present	Past and Present. Oxford.
PIKS/PISC	Die Publikationen des Institutes für klassische Studien/ Publicațiile Institutului de studii clasice. Cluj-Napoca.
PBF	Praehistorische Bronzefunde. Berlin.
PMÉ	Acta Musei Papensis – Pápai Múzeumi Értesítő.
PZ	Prähistorische Zeitschrift. Berlin.
Rev. Muz.	Revista Muzeelor, București.
RIR	Revista Istorică Română.
RMM-MIA	Revista Muzeelor și Monumentelor. seria Monumente istorice și de artă. București.
RMMN	Revista Muzeului Militar Național. București.
Ruralia	Ruralia. Památky Archeologické – Supplementum. Praha.
RVM	Rad Vojvodjanskih Muzeja, Novi Sad.
SCIV(A)	Studii și Cercetări de Istorie Veche. București.
SCN	Studii și Cercetări Numismatice. București.
SlovArch	Slovenská Archeológia. Nitra.
SIA	Studii de Istoria Artei. Cluj Napoca.
SIB	Studii de istorie a Banatului. Timișoara.
SKMÉ	A Szántó Kovács János Múzeum Évkönyve, Orosháza.
SMIM	Studii și Materiale de Istorie Medie. București.
SMMA	Szolnok Megyei Múzeumi Adattár. Szolnok.
SMMIM	Studii și Materiale de Muzeografie și Istorie Militară. București.
Starinar	Starinar. Arheološki Institut. Beograd.
StCl	Studii Clasice, București.
StComBrukenthal	Studii și comunicări. Sibiu.
StudArch	Studia Archaeologica. Budapest.
StudCom	Studia Comitatus. Szentendre.
StudUnivCib	Studia Universitatis Cibiniensis. Sibiu.
StudCom – Vrancea	Studii și Comunicări. Muzeul Județean de Istorie și Etnografie Vrancea. Focșani.
StudŽvest	Študijne Zvesti Arheologického Ústavu Slovenskej Akadémie Vied. Nitra.
Symp. Thrac.	Symposia Thracologica. București.
Tempora Obscura	Tempora Obscura. Békéscsaba 2012.
Tibiscus	Tibiscus. Timișoara.
VAH	Varia Archaeologica Hungarica. Budapest.

VMÉ
Ziridava
ZM
ZSA

A Vas megyei Múzeumok Értesítője
Ziridava. Arad.
A Vas megyei Múzeumok Értesítője
Ziridava Studia Archaeologica. Arad.